

# MODERN FARMHOUSE

*Unite city and countryside for a space brimming with character.*

WRITER *Lauren Iverson*



1

White subway tile with dark grout draws the eye up to a whitewashed wood ceiling in this industrial-farmhouse kitchen. Oak shelving and countertops cozy up the space and balance the cool metal finishes throughout.



2



3



4



5

2 An antique gilded mirror makes a dramatic impression when surrounded by an expanse of white in this airy master bath inspired by old French farmhouses. New oak floors were aged with lye to further the classic look. ■ 3 A brass faucet and soapstone countertops are nostalgic additions to this cheerful country kitchen. ■ 4 Reclaimed wood paneling is a rustic counterpoint to bright white bath cabinetry and quartz-surfacing countertops. ■ 5 Double-hung windows with black metal frames highlight the importance of architecture in a modern farmhouse aesthetic. A one-of-a-kind old English baker's table, repurposed as an island, lends authenticity by showing decades of wear and tear.



Vintage-look hexagonal tiles and a furniturelike vanity, painted to match the antique mirror above, create a gathered-over-time feel in this remodeled bath. Burlap baskets add texture and charming storage to the small space.





## Idea Gallery



7



8



9

7 Wood, white, and metal are a winning combination in this lake house dining room. The table was cut to size and refinished to complement the salvaged beams' warm tones. ■ 8 Nothing says farmhouse quite like an apron-front sink. Crisp sage-green cabinets echo the verdant views out the window, while a shimmering mosaic-tile backsplash brings modern flair. ■ 9 Board-and-batten walls frame this elegant farmhouse bath, where a romantic claw-foot tub enjoys a prime spot. The custom vanity was designed to resemble an antique dresser.

## Idea Gallery



*10* Inspired by a New York City restaurant kitchen, this design spotlights authentic materials like exposed brick, reclaimed wood, polished stone, and fabricated steel for an edgy take on farmhouse style. ▪ *11* White is always right in a farmhouse-inspired bath. A midcentury-modern chair and contemporary light fixture keep the look fresh. ▪ *12* A pastel palette gets a kick with dark metal sconces and crisp white appliances. Subway tile is a mainstay in farmhouse kitchens—here, it repeats on the range hood for a double dose of vintage charm. ▪ *13* An antique utility sink in deep blue makes waves in a small bath fashioned around flea market finds. Porcelain handles on the wall-mount faucet add the perfect finishing touch.



14

Repeating patterns on the floor and ceiling offer a fresh take on vintage motifs in this free-spirited farmhouse kitchen. Gold-tone hardware in simple silhouettes elevates the look.





THIS PHOTO: Wanting a more colorful, lively statement than a bath mat could give, the designers cut an 8×10-foot rug into two runners—one for the bath and one for the vestibule. OPPOSITE: Peonies reference the colors throughout the bath. “I love purples, fuchsias, and pinks,” says homeowner Taylor Hawkins, who owns a skin care salon.





*Luxurious amenities  
and a hint of sparkle  
make this updated bath  
a favorite escape for a  
globe-trotting couple.*



# Five-Star Getaway

WRITER *LuAnn Brandsen*  
PHOTOS *Werner Segarra*  
FIELD EDITOR *Jessica Brinkert Holtam*





TOP: The homeowners opted for high-contrast Bianco Carrara marble with dark veining for the countertops, shower, and floors. ABOVE: Crystal and matte brass sconces epitomize the bath's classic-meets-sparkle fusion. OPPOSITE: A contemporary mirror-tile mosaic energizes the look of the marble-clad shower.

**WHILE SHE LOVES TO TRAVEL**, Taylor Hawkins' favorite place on earth is a passport-free zone. "The design, the layout, and all the natural light—it's hard to describe how much I love this space," says Taylor of the marble-clad master bath retreat in her Scottsdale, Arizona, home. "Every time I walk in, it just makes me so happy that I don't want to leave."

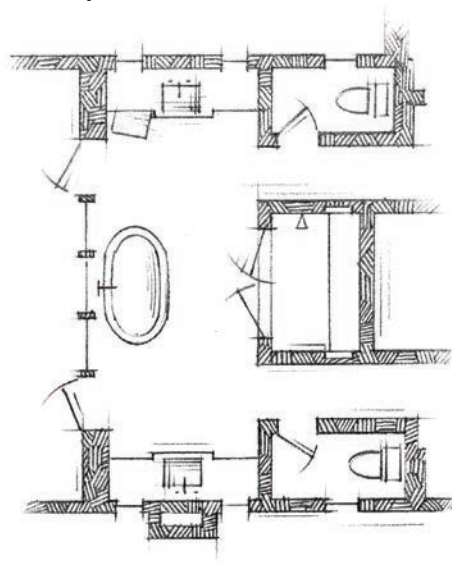
Pointing a complimentary finger, Taylor and her husband, Mark, credit the bath's irresistible allure to interior designer Caroline Tyler DeCesare, who partnered with Michelle Grams on the project. "We knew Mark and Taylor were sophisticated world travelers, so our goal was to create a bath that would rival a five-star hotel experience," DeCesare says.

The couple-friendly floor plan features separate water closets and vanities, a luxe tub, and a spacious walk-in shower. Gray bespoke cabinetry anchors the room, with silver-leaf millwork that repeats on frames for a mirror and windows on each 8-foot vanity wall. The designers also introduced more playful, glamorous elements, including jaunty lighting, sparkling mixed metals, and an abstract mirror-tile mosaic in the shower, to punch up the room's traditional styling.

While the bath functions beautifully, Taylor stresses that its meticulous details grab her attention, too. "One of my favorite hotels is The Gritti Palace in Venice," she says, noting its outstanding decor, artwork, finishes, and canal view. "I admire all the work that goes into a hotel like that, and I feel that same level of detail has defined this space."

*Resources begin on page 122.*

## *the plan*



A focus on symmetry yields a floor plan ideal for a couple who like to share space without stepping on each other's toes.

Hallways on each side of the shower provide individual access. Separate vanities and toilet compartments mirror each other on opposite sides of the room. The communal area includes a soaking tub and walk-in shower.









THIS PHOTO: "Taking baths is one of my favorite things to do," Taylor says. "I'll put some Epsom salts in there, grab a glass of wine, turn on the TV, and soak." The window wall behind the tub includes French doors leading to a balcony with pool and mountain views. OPPOSITE, TOP LEFT: A trio of chandeliers dazzle like sparklers overhead. "They look modern, but their design actually dates back to the '40s," designer Caroline Tyler DeCesare says. OPPOSITE, TOP RIGHT: Touch-latch medicine cabinets tuck discreet storage into slivers of space. OPPOSITE BOTTOM: A telephone-style tub filler in shiny polished nickel adds vintage verve.





## DESIGNER INSIGHTS: PUTTIN' ON THE GLITZ

Designer Caroline Tyler DeCesare offers smart advice for mixing modern metals in a way that won't come across as too trendy.

- *Strategize in layers.* Stay classy by using the same metal and the same sheen for each layer of design. In this bath, polished nickel plumbing fixtures and hardware underscore matte brass chandeliers and sconces.
- *Keep it limited.* Stick with just two metals for a look that's refined, not scattered. Decide which will be your basic metal and which will be your accent.
- *Lighten the look.* Mix in glass and crystal to brighten metal's naturally heavy attributes. Hardware and lighting fixtures provide easy ways to add bits of shimmer and shine.
- *Invest wisely.* Choose a timeless finish like polished nickel for the most expensive items, saving more cyclical gold tones or copper for less costly pieces. Not that it's cheap, but it's generally easier to switch out all your lighting than an entire plumbing suite.