

Urban Oasis

Clean-lined
architecture and
contemporary
furnishings give
a sun-drenched
Arizona home
the feeling of a
world-class resort.

WRITTEN BY MARGARET ZAINY ROUX
PHOTOGRAPHY BY WERNER SEGARRA
PRODUCED BY JESSICA BRINKERT HOLTAM

The geometric silhouettes of the home's black-framed windows are echoed by airy furniture designs—such as the dining room's chrome-leg table—that provide function while allowing the eye to travel to the natural beauty outside.





THIS PHOTO: The rugged texture of the basalt-clad fireplace and its slate hue triggered the neutral tones and nubby textiles used to furnish the great-room. RIGHT: The front walk is comprised of stone pavers floating within a sea of black pebbles that hint at the home's Asian influence within.



Who says you can't be on vacation year-round? "My clients traveled extensively through Bali and wanted their new house to rival the tranquil, spa-like resorts they discovered during their stays," says interior designer Caroline Tyler DeCesare, who worked with designer Nicole Melde to help craft a relaxed, exotic air for this 5,800-square-foot home near Phoenix. "They sought a strong indoor-outdoor connection that would encourage alfresco living while taking full advantage of Arizona's mild year-round climate."

Architect Gary Wyant devised a contemporary exterior that uses articulated massing to allow outdoor living and garden spaces to be pulled in through walls of floor-to-ceiling doors and windows. Generally speaking, the home has a low-profile front exterior that flows into a U shape in the rear, but the floor plan ambles as it unfurls. Wyant turned hallways into opportunities to create intriguing sight lines; windows at every turn look out to private courtyards landscaped in Zen style with bamboo and bonsai.

Black powder-coated metal window frames provide a linear outline for those garden views as well as for bright white walls and heavily veined limestone flooring. The end result is an ethereal glow that DeCesare and Melde cultivated with honest materials, see-through-style furnishings, and dramatically scaled focal points—such as the great-room's 15-foot-tall fireplace and kitchen's stainless-steel range hood.

"We sourced only authentic materials that looked organic—heavily veined marble, deeply striated limestone, and knotty, groovy oak," DeCesare says. "For contrast, we incorporated sleek lacquered, gilded, and polished finishes and streamlined furnishings made from nickel and chrome."

Sculptural living decor, such as fiddle-leaf fig trees and vessels filled with wispy grasses, amplify the home's indoor-out connections. "Although the home is contemporary in form and aesthetic, it is timeless in its function factor," DeCesare says. "Nothing is so modern or minimal that it looks sparse or cold. All of our selections—from the basic building materials to the finishing touches—are hardy enough to withstand everyday enjoyment."

RESOURCES BEGIN ON PAGE 138.




“Layering textures lends both visual and tactile interest to the home’s organic, earthy palette.”

—INTERIOR DESIGNER
CAROLINE TYLER DeCESARE



OPPOSITE: A pair of barrel-back bar stools and glass-globe pendants soften the straight angles of a waterfall-style peninsula and elongated perimeter windows in the wet bar. ABOVE: The kitchen’s ebony-stained oak island was built extra wide and extra deep to balance the weight of the range niche, which is lined with sheets of polished Calacatta marble. MIDDLE, FAR LEFT: A sandy-color ceramic-tile backsplash and abstract painting infuse the powder room with movement without disturbing its calm aura. MIDDLE LEFT: Towering date palms planted in a linear pattern serve as an extension of the home’s architecture while enhancing the landscape’s tropical feel. BOTTOM, FAR LEFT: Leather chairs and an Erik Gonzales painting turn an alcove off the hallway between the great-room and office into a destination. BOTTOM LEFT: Wide bands of black and white subway tiles in a guest bath echo the home’s neutral palette in a dramatic way.





The use of two different floor coverings creates an elegant distinction between the bathing and dressing areas of the T-shape master bath. European oak floorboards run the length of the espresso-stained hand-scraped oak vanities. The soaking tub and shower stall are built atop Palissandro marble tiles laid in a running bond pattern.

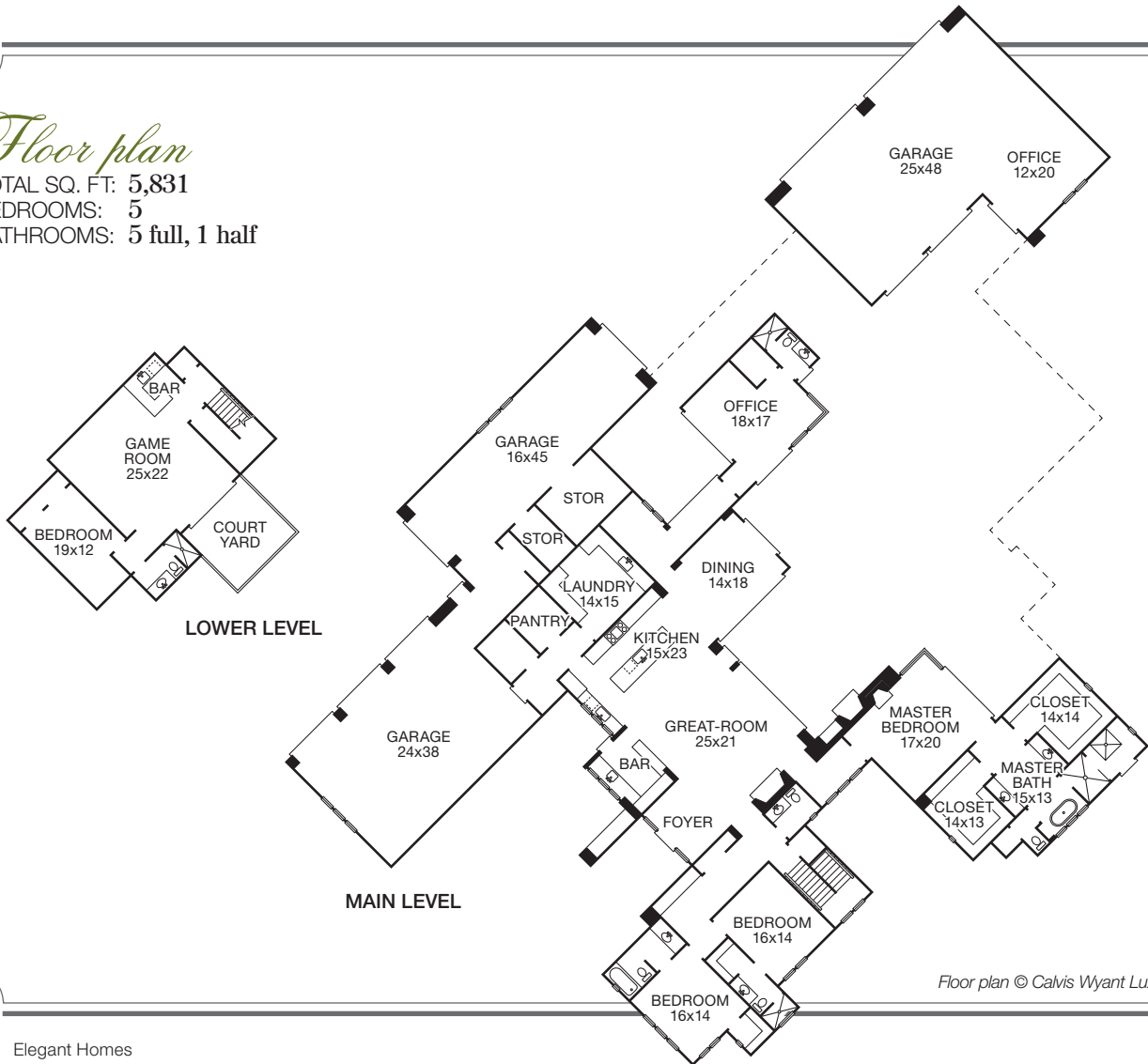


RIGHT: The home's U-shape configuration is accentuated by three connected porches and pools. A raised limestone fire pit is situated at the far end of the decking and serves as a buffer between the pool and a bocce-ball court. OPPOSITE: A polished nickel frame and tufted leather headboard put a fresh spin on a traditional canopy-style bed. Billowy linen draperies feature a subtle metallic sheen that twinkles when sunlight filters through.



Floor plan

TOTAL SQ. FT: 5,831
BEDROOMS: 5
BATHROOMS: 5 full, 1 half



Floor plan © Calvis Wyant Luxury Homes

